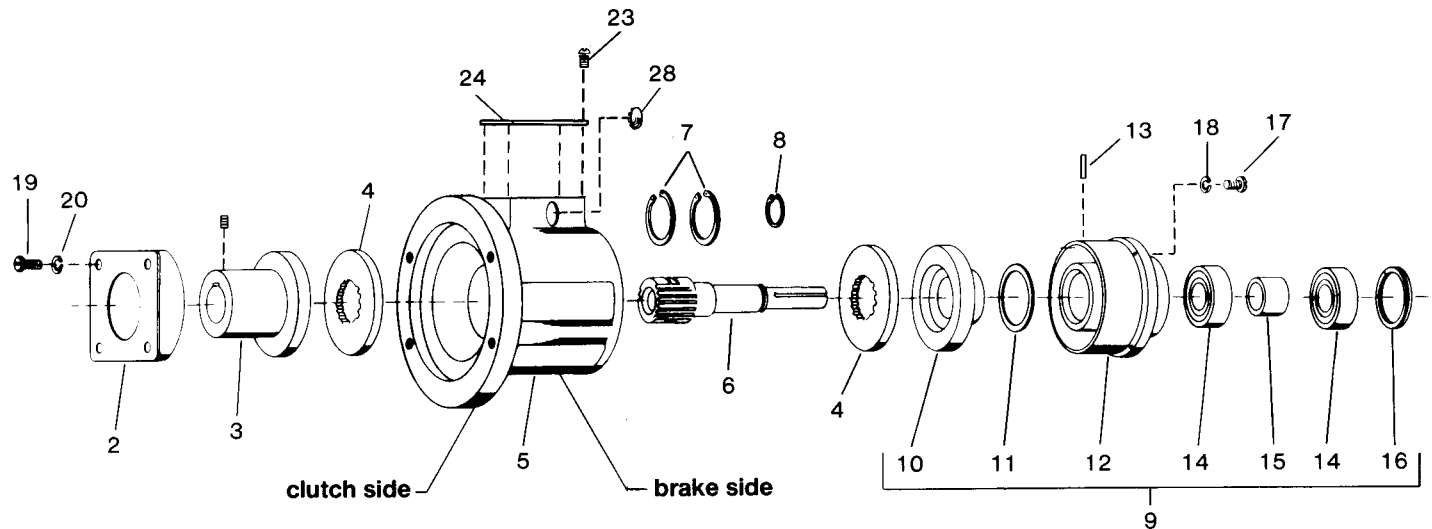


Parts List for Size 3 CFCB Clutch-Brakes

Serial and model numbers from nameplate are required when ordering replacement parts.

See reverse side for Tor-ac model.

2-13-2531-00 standard
2-13-2531-04 spring release



Item No.	Description	Part Number	Qty.	1/2 Dia. Shaft
2	Magnet body and coil assembly – clutch 90-100 volts, DC 24-28 volts, DC 12 volts, DC 6 volts, DC	5-04-0030-01-01J	1	
		5-04-0030-01-01E	1	
		5-04-0030-01-01C	1	
		5-04-0030-01-01B	1	
		5-04-0030-01-01A	1	
3	Drivehub (3/8 dia.) Drivehub (1/2 dia.)	5-30-0230-00-10L	1	
		5-30-0230-00-100	1	
4	Armature	8-405-578-00	2	
5	Housing	8-443-011-01	1	
6	Shaft – brake (1/2 dia.)	8-464-008-00	1	
7	Retaining ring	9-03-0002-00	2	
8	Retaining ring	9-03-0026-00	1	
9	Brake assembly (includes items 10 through 16) 90-100 volts, DC 24-28 volts, DC 12 volts, DC 6 volts, DC	5-40-5030-01-01J	1	
		5-40-5030-01-01E	1	
		5-40-5030-01-01C	1	
		5-40-5030-01-01B	1	
		5-40-5030-01-01A	1	
10	Friction face assembly	5-30-0224-02	1	
11	Spacer	8-455-109-01	1	
12	Magnet body and coil assembly – brake 90-100 volts, DC 24-28 volts, DC 12 volts, DC 6 volts, DC	5-04-0030-02-01J	1	
		5-04-0030-02-01E	1	
		5-04-0030-02-01C	1	
		5-04-0030-02-01B	1	
		5-04-0030-02-01A	1	
13	Spirol pin	9-32-2020-00	4	

Item No.	Description	Part Number	Qty.	1/2 Dia. Shaft
14	Ball bearing	9-01-0022-00	2	
15	Spacer	8-455-115-00	1	
16	Retaining ring	9-03-0079-00	1	
17	Screw	9-10-2708-00	4	
18	Lock washer	9-45-0327-00	4	
19	Round head screw	9-10-2610-00	4	
20	Lock washer	9-45-0326-00	4	
23	Screw	9-25-7008-00	4	
24	Nameplate	—	1	
28	Snap-in blank	9-61-1150-00	1	
not shown	Installation and Maintenance Sheet (CFCB)	8-078-800-03	1	

TABLE B

For spring release use:		
Release spring	8-404-803-02	2 required
Cap screw	9-15-9999-00	6 required
Lock washer	9-45-0327-00	6 required

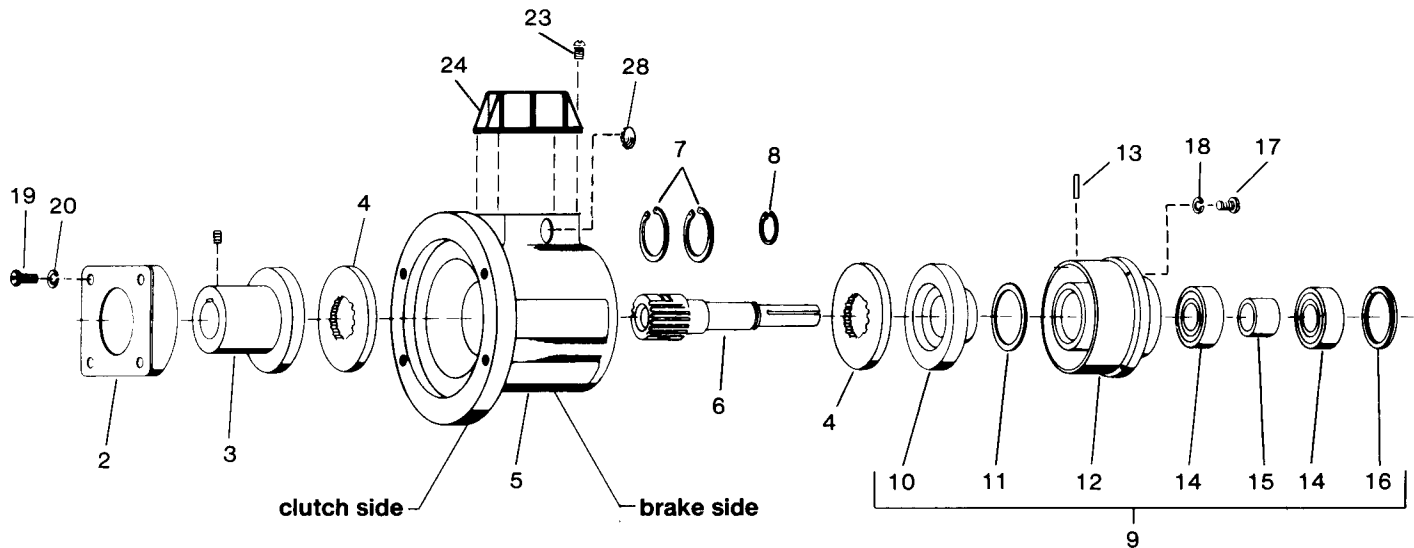
TABLE C

For case hardened armature use in place of item 4:		
Armature	8-405-578-01	2 required

Parts List for Size 3 CFCB Tor-ac® Clutch-Brakes

Serial and model numbers from nameplate are required when ordering replacement parts.

2-13-2571-00 standard
2-13-2571-01 spring release



Item No.	Description	Part Number	Qty.	½ Dia. Shaft
2	Magnet body and coil assembly – clutch 90-100 volts, DC	5-04-0030-01-01J	1	
3	Drivehub (¾ dia.) Drivehub (¾ dia.)	5-30-0230-00-10L 5-30-0230-00-10O	1 1	
4	Armature	8-405-578-00	2	
5	Housing	8-443-011-01	1	
6	Shaft – brake (½ dia.)	8-464-008-00	1	
7	Retaining ring	9-03-0002-00	2	
8	Retaining ring	9-03-0026-00	1	
9	Brake assembly (includes items 10 through 16) 90-100 volts, DC	5-40-5030-01-01J	1	
10	Friction face assembly	5-30-0224-02	1	
11	Spacer	8-455-109-01	1	
12	Magnet body and coil assembly – brake 90-100 volts, DC	5-04-0030-02-01J	1	
13	Spirol pin	9-32-2020-00	4	
14	Ball bearing	9-01-0022-00	2	
15	Spacer	8-455-115-00	1	
16	Retaining ring	9-03-0079-00	1	

Item No.	Description	Part Number	Qty.	½ Dia. Shaft
17	Screw	9-10-2708-00	4	
18	Lock washer	9-45-0327-00	4	
19	Round head screw	9-10-2610-00	4	
20	Lock washer	9-45-0326-00	4	
23	Screw	9-25-7309-00	4	
24	Tor-ac power supply (115 VAC input)	4-1-20190-00	1	
28	Snap-in blank	9-61-1150-00	1	
not shown	Installation and Maintenance Sheet (Tor-ac CFCB)	8-078-857-01	1	
not shown	Tor-ac Instruction Tag	8-078-861-00	1	

TABLE E

For spring release use:		
Release spring	8-404-803-02	2 required
Screw	9-15-9999-00	6 required
Lock washer	9-45-0327-00	6 required

TABLE F

For case hardened armature use in place of item 4:		
Armature	8-405-578-01	2 required